

## Monitoring & Control Accessories: Cameras

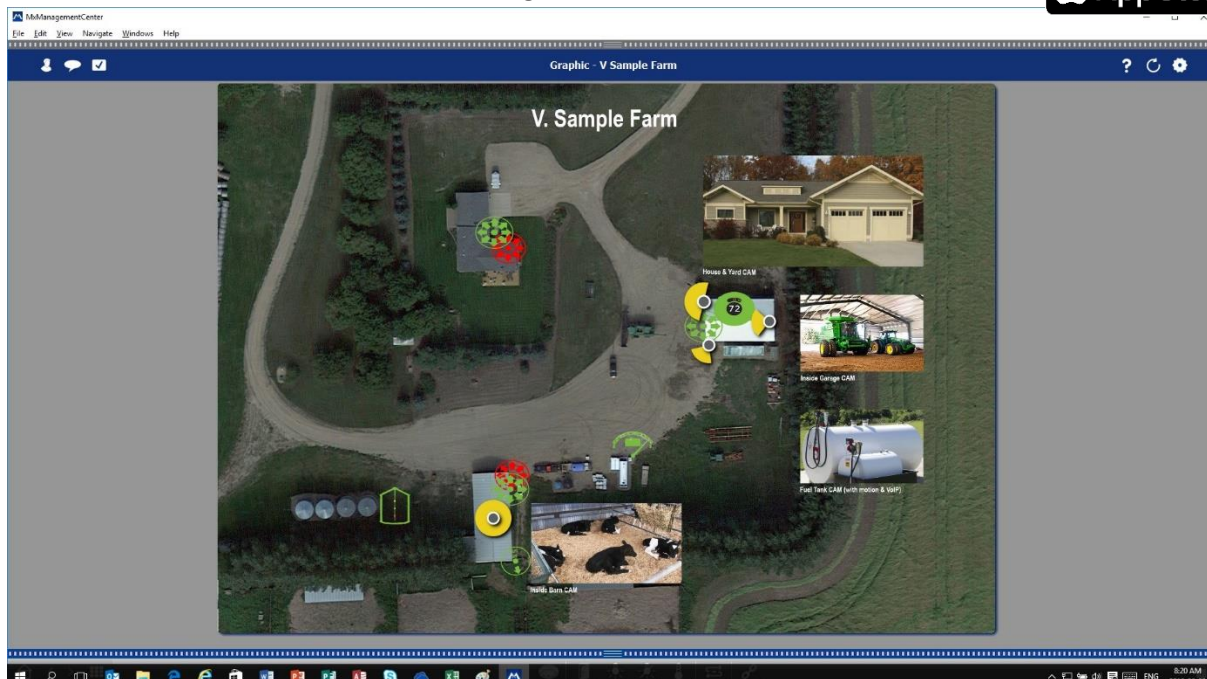
### Mobotix Digital Point Tilt Zoom Cameras

For a higher level surveillance solution, Intelliconn is featuring the Mobotix line of cameras.

#### Description (applies to all camera models):

- Integrated DVR (4GB SD card) and on-board video processing to avoid network loading.
- Moonlight technology for excellent image quality recording even in very low light conditions. Some cameras feature a night sensor for ultra low light recording.
- MxActivitySensor, a sophisticated movement sensor to detect motion without false alarms or complicated configuration, to capture true event recording.
- An integrated microphone and speaker allows clear communication through the camera.
- Continuous digital point tilt zoom (PTZ) functionality with no moving parts for low power consumption, typically 4 to 5 Watts for 1 sensor units,
- Weatherproof construction.
- Simple one network cable PoE installation
- Software for creating a high quality surveillance system and an iOS mobile device app.

MxManagement Center screenshot:



Sensor resolution	6MP: 3072x2048 pixels (colour or B&W)
Image Sensors	1/1.8" CMOS (6MP) in Day (colour) or Night (B&W)
Compression	MxPEG, M-JPEG, JPEG, H.264 (SIP video only)
DVR Recording	Internal: microSD card, External: PC/NAS (to 4TB)
Audio	Integrated microphone & speaker, VoIP, intercom, sound recording
Software (free)	MxManagement Center, MOBOTIX app (on App Store)

