

## Accessories

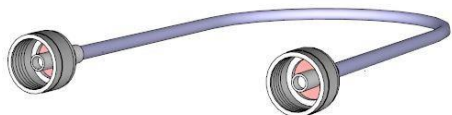
**ACS-1017** – 5-port passive POE for hyMesh, HM-B, DP-AG, and Wi-Fi AP product lines. 1 LAN port for data and 4 POE ports for powering devices.



**ACS-1025** – Replacement N-type, F-F-M T adapter. Used to extend the antenna port on hyMesh, HM-WF, and HM-B products to allow multiple antennas. For N antennas, N-1 adapters are needed.



**ACS-1026** – Replacement 195 coaxial cable, N-Male to N-Male, 2ft long. Low loss, high frequency. Used to connect directional antennas to N-type T adapters on hyMesh, HM-WF, and HM-B products.



**ACS-1027** – Replacement car adapter power cable for HM-WF products. For use in powering the HM-WF products in mobile mounting applications.



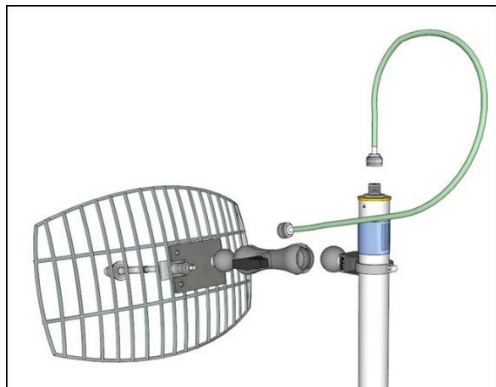
**ACS-1028** – Replacement AC-DC power adapter for HM-WF products. Rated at 12V/1A output, with a 2.1mm connector. For use in powering the HM-WF products when an AC power source is available.



## Accessories

**ACS-1029** – Replacement battery adapter cable for HM-WF products. For use in powering HM-WF products directly off of a 12V battery.

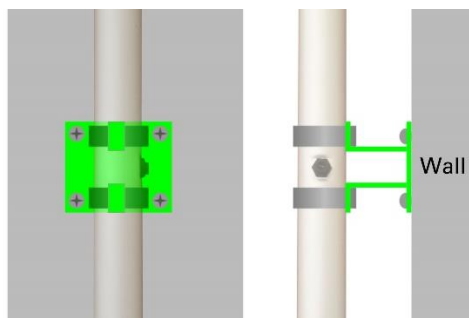
**ANT-DG-1018** – 5.8GHz 22dBi add-on grid antenna kit for expanding antenna quantity on HM-B. Maximum antenna capacity on one HM-B is 4 antennas. Kit includes mount, cable, and N-type T adapter.



**ANT-DY-1030** – 5.8GHz 17dBi add-on Yagi antenna kit for expanding the antenna quantity on the hyMesh and HM-WF products. Maximum antenna capacity on one unit is 4 antennas. Kit includes mount, cable, and N-type T-adapter.



**BRKT-HM-WF-1031** – Basic wall mount bracket for hyMesh, Wi-Fi AP, and HM-WF products. Includes clamps and mounting hardware.



## Accessories

**HDW-1032** – POE Switch enclosure box. Waterproof enclosure for POE or POE switch mounting in remote mount locations.



**MNT-1021** – RAM Mount kit. Optional RAM mounting “claw” for mobile or pole mounting of the HM-WF for exceptional flexibility in adjustment.



**MNT-1022** – Tripod, for use in temporary field mounting of products.



## Accessories

**ACS-E010-1204** – Cat5E 350MHz Ethernet patch cable, 10ft length. For tying hyMesh and Wi-Fi AP products into the main router, or peripheral IP products into the LAN port of a POE adapter.



Other lengths available as follows:

- ACS-E001-1201** CAT5E Ethernet cable 1.5'
- ACS-E003-1202** CAT5E Ethernet cable 3'
- ACS-E006-1203** CAT5E Ethernet cable 6'
- ACS-E025-1205** CAT5E Ethernet cable 25'
- ACS-E050-1206** CAT5E Ethernet cable 50'
- ACS-E075-1207** CAT5E Ethernet cable 75'
- ACS-E100-1208** CAT5E Ethernet cable 100'
- ACS-E150-1209** CAT5E Ethernet cable 150'
- ACS-E250-1210** CAT6 Ethernet cable 250' outdoor burial grade

